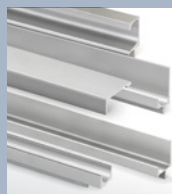


# Index

---



Aluminium handles  
and integrated  
profiles  
**Pag. 257**



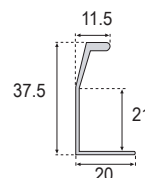
Handles  
**Pag. 260**

## Aluminium Handles



ANODIZING

Silver Matt	Ref.	<b>F28194</b>	<b>F28194-2,8</b>
Packaging		24 bars of 2,6 mts.	24 bars of 2,8 mts.

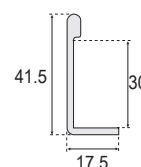


## Aluminium Handles

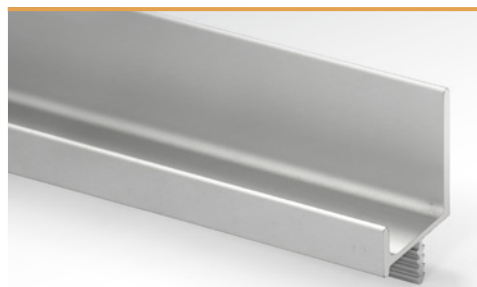


ANODIZING

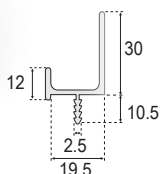
Silver Matt	Ref.	<b>F27734</b>
Packaging		24 bars of 2,44 mts.



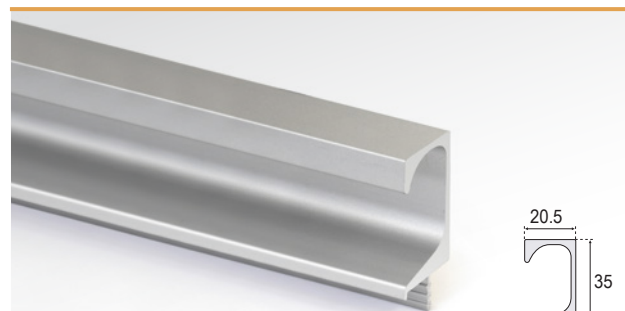
## Integrated profile for cabinet doors. 30 mm



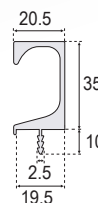
Silver Matt	Ref.	<b>F27714</b>
Packaging		8 bars of 2,44 mts.



## Integrated profile for cabinet doors. 35 mm

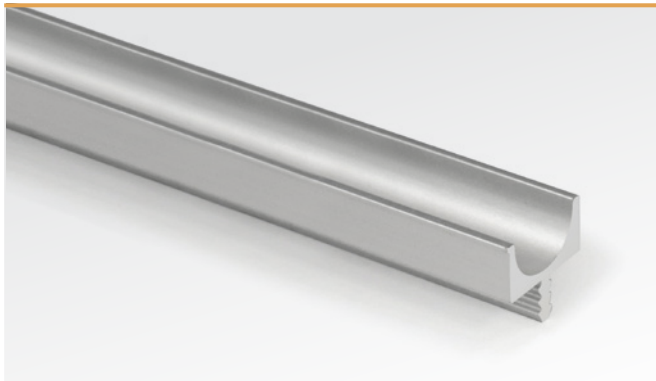


Silver Matt	Ref.	<b>F27724</b>
Packaging		8 bars of 2,44 mts.

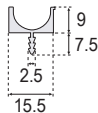


# Handles

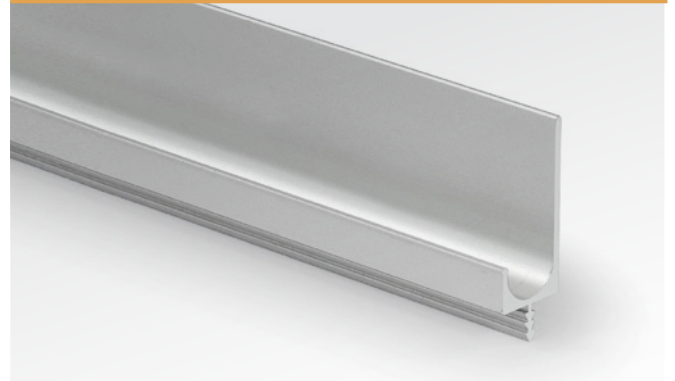
## Integrated profile upper for cabinet doors



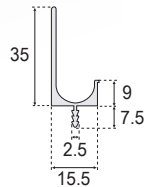
Silver Matt	Ref.	<b>F50003</b>
Silver Shine	Ref.	<b>F50004</b>
Stainless steel look	Ref.	<b>F50005</b>
White	Ref.	<b>F50006</b>
Black Matt	Ref.	<b>F50005-NM</b>
Packaging	24 bars of 3 mts.	



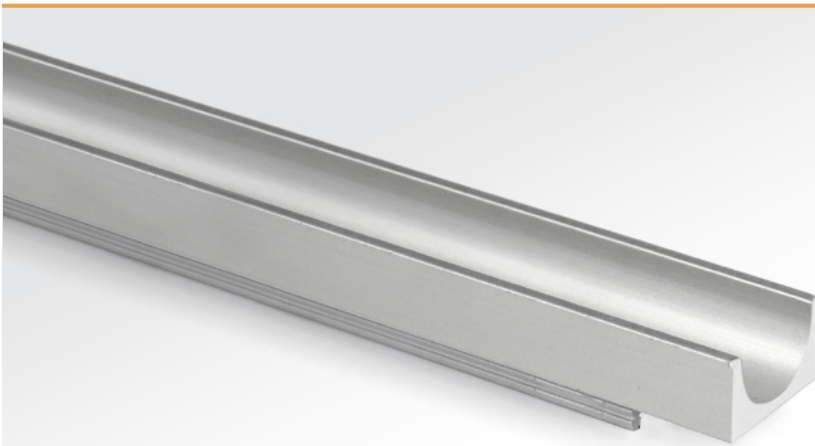
## Integrated profile for cabinet doors 35 mm.



Silver Matt	Ref.	<b>F50000</b>
Silver Shine	Ref.	<b>F50001</b>
Stainless steel look	Ref.	<b>F50002</b>
White	Ref.	<b>F50007</b>
Black Matt	Ref.	<b>F50009-NM</b>
Packaging	24 bars of 3 mts.	



## Integrated profile upper for cabinet doors. Handle

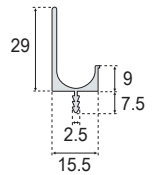
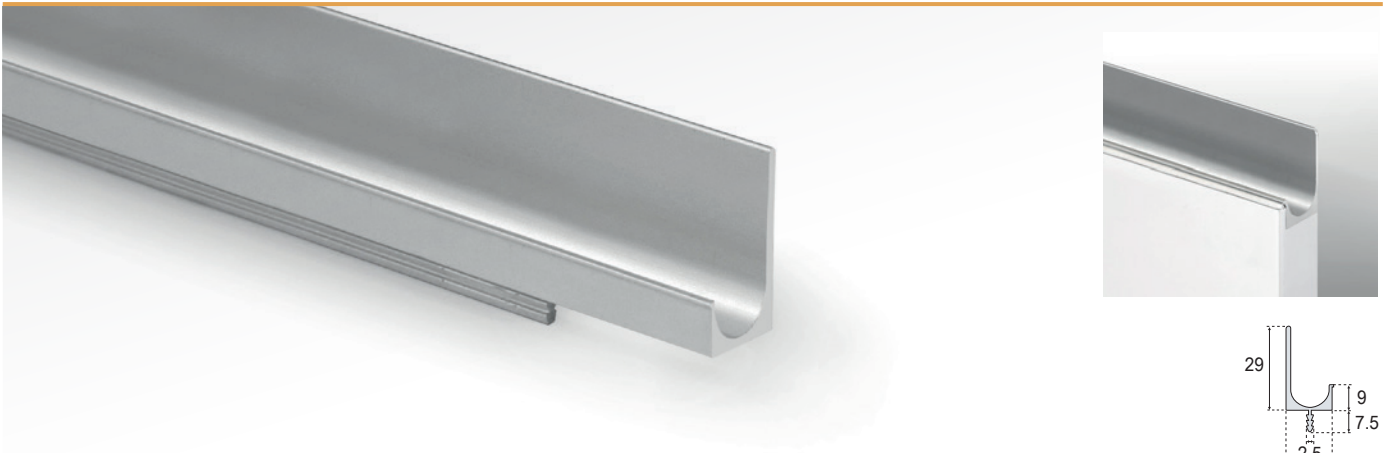


Cabinet		150	200	250	300	350	400	450
Silver Matt	Ref.	<b>F50110</b>	<b>F50111</b>	<b>F50112</b>	<b>F50050</b>	<b>F50051</b>	<b>F50052</b>	<b>F50053</b>
Silver Shine	Ref.	<b>F50113</b>	<b>F50114</b>	<b>F50115</b>	<b>F50061</b>	<b>F50062</b>	<b>F50063</b>	<b>F50064</b>
Stainless Steel Look	Ref.	<b>F50116</b>	<b>F50117</b>	<b>F50118</b>	<b>F50072</b>	<b>F50073</b>	<b>F50074</b>	<b>F50075</b>
White	Ref.	<b>F50083</b>	<b>F50084</b>	<b>F50085</b>	<b>F50086</b>	<b>F50087</b>	<b>F50088</b>	<b>F50089</b>
Black Matt	Ref.	<b>F50110-NM</b>	<b>F50111-NM</b>	<b>F50112-NM</b>	<b>F50050-NM</b>	<b>F50051-NM</b>	<b>F50052-NM</b>	<b>F50053-NM</b>
Cabinet		500	600	700	800	900	1000	1200
Silver Matt	Ref.	<b>F50054</b>	<b>F50055</b>	<b>F50056</b>	<b>F50057</b>	<b>F50058</b>	<b>F50059</b>	<b>F50060</b>
Silver Shine	Ref.	<b>F50065</b>	<b>F50066</b>	<b>F50067</b>	<b>F50068</b>	<b>F50069</b>	<b>F50070</b>	<b>F50071</b>
Stainless Steel Look	Ref.	<b>F50076</b>	<b>F50077</b>	<b>F50078</b>	<b>F50079</b>	<b>F50080</b>	<b>F50081</b>	<b>F50082</b>
White	Ref.	<b>F50090</b>	<b>F50091</b>	<b>F50092</b>	<b>F50093</b>	<b>F50094</b>	<b>F50095</b>	<b>F50096</b>
Black Matt	Ref.	<b>F50054-NM</b>	<b>F50055-NM</b>	<b>F50056-NM</b>	<b>F50057-NM</b>	<b>F50058-NM</b>	<b>F50059-NM</b>	<b>F50060-NM</b>

Packaging 24 handles

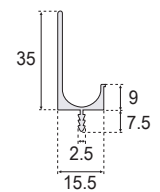
Mechanization Default: be cut 3 mm. less than the measurement of the cabinet.

## Integrated profile for cabinet doors 29 mm. Handle.



Cabinet	150	300	350	400	450	500	600	900
Silver Matt	Ref. <b>F50200</b>	<b>F50201</b>	<b>F50202</b>	<b>F50203</b>	<b>F50204</b>	<b>F50205</b>	<b>F50206</b>	<b>F50207</b>
Packaging	24 handles							
Mechanization	Default: be cut 3 mm. less than the measurement of the cabinet.							

## Integrated profile for cabinet doors 35 mm. Handle.



Cabinet	150	200	250	300	350	400	450
Silver Matt	Ref. <b>F50100</b>	<b>F50101</b>	<b>F50102</b>	<b>F50010</b>	<b>F50011</b>	<b>F50012</b>	<b>F50013</b>
Silver Shine	Ref. <b>F50104</b>	<b>F50105</b>	<b>F50106</b>	<b>F50021</b>	<b>F50022</b>	<b>F50023</b>	<b>F50024</b>
Stainless Steel Look	Ref. <b>F50107</b>	<b>F50108</b>	<b>F50109</b>	<b>F50032</b>	<b>F50033</b>	<b>F50034</b>	<b>F50035</b>
White	Ref. <b>F50120</b>	<b>F50121</b>	<b>F50122</b>	<b>F50123</b>	<b>F50124</b>	<b>F50125</b>	<b>F50126</b>
Black Matt	Ref. <b>F50100-NM</b>	<b>F50101-NM</b>	<b>F50102-NM</b>	<b>F50010-NM</b>	<b>F50011-NM</b>	<b>F50012-NM</b>	<b>F50013-NM</b>
Cabinet	500	600	700	800	900	1000	1200
Silver Matt	Ref. <b>F50014</b>	<b>F50015</b>	<b>F50016</b>	<b>F50017</b>	<b>F50018</b>	<b>F50019</b>	<b>F50020</b>
Silver Shine	Ref. <b>F50025</b>	<b>F50026</b>	<b>F50027</b>	<b>F50028</b>	<b>F50029</b>	<b>F50030</b>	<b>F50031</b>
Stainless Steel Look	Ref. <b>F50036</b>	<b>F50037</b>	<b>F50038</b>	<b>F50039</b>	<b>F50040</b>	<b>F50041</b>	<b>F50042</b>
White	Ref. <b>F50127</b>	<b>F50128</b>	<b>F50129</b>	<b>F50130</b>	<b>F50131</b>	<b>F50132</b>	<b>F50133</b>
Black Matt	Ref. <b>F50014-NM</b>	<b>F50015-NM</b>	<b>F50016-NM</b>	<b>F50017-NM</b>	<b>F50018-NM</b>	<b>F50019-NM</b>	<b>F50020-NM</b>
Packaging	24 handles						
Mechanization	Default: be cut 3 mm. less than the measurement of the cabinet.						

# Handles

## Stainless steel Handles - Hollow



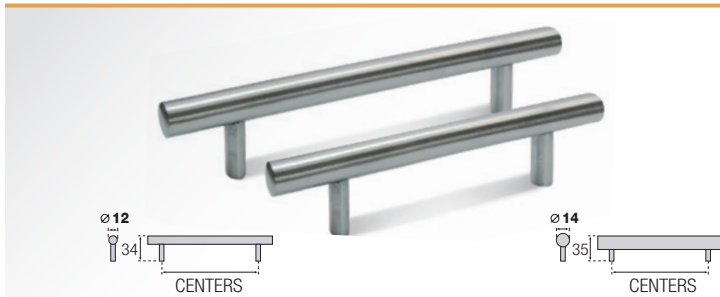
CENTERS	Ref.	Packaging
96 mm.	<b>DAI14M96</b>	200
128 mm.	<b>DAI14M128</b>	200
160 mm.	<b>DAI14M160</b>	200
192 mm.	<b>DAI14M192</b>	100
242 mm.	<b>DAI14M242</b>	100
256 mm.	<b>DAI14M256</b>	100
320 mm.	<b>DAI14M320</b>	100



	Ref.	Packaging
Bars	<b>DAI14M</b>	25 units a 2 meters
Torretas	<b>TORRETA14M</b>	400 units

Consult for special measures.

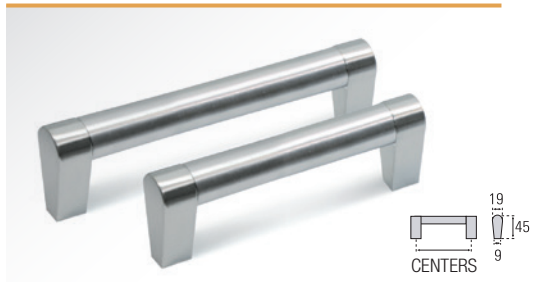
## Stainless steel handles - Solid



CENTERS	Ref. Ø 12	Packaging
96 mm.	<b>DAI089612</b>	100
128 mm.	<b>DAI0812812</b>	100
160 mm.	<b>DAI0816012</b>	100
192 mm.	<b>DAI0819212</b>	100
224 mm.	<b>DAI0822412</b>	50
242 mm.	<b>DAI0824212</b>	70
256 mm.	<b>DAI0825612</b>	80
288 mm.	<b>DAI0828812</b>	50
292 mm.	<b>DAI0829212</b>	60
320 mm.	<b>DAI0832012</b>	60
342 mm.	<b>DAI0834212</b>	60
352 mm.	<b>DAI0835212</b>	50
356 mm.	<b>DAI0835612</b>	60
384 mm.	<b>DAI0838412</b>	50
392 mm.	<b>DAI0839212</b>	50
416 mm.	<b>DAI0841612</b>	40
442 mm.	<b>DAI0844212</b>	50
448 mm.	<b>DAI0844812</b>	40
492 mm.	<b>DAI0849212</b>	50
544 mm.	<b>DAI0854412</b>	40
576 mm.	<b>DAI0857612</b>	40
592 mm.	<b>DAI0859212</b>	30
642 mm.	<b>DAI0864212</b>	30
692 mm.	<b>DAI0869212</b>	30
704 mm.	<b>DAI0870412</b>	30
736 mm.	<b>DAI0873612</b>	30
792 mm.	<b>DAI0879212</b>	30
896 mm.	<b>DAI0889612</b>	30
960 mm.	<b>DAI0896012</b>	20
1192 mm.	<b>DAI08119212</b>	20

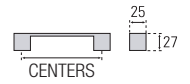
CENTERS	Ref. Ø 14	Packaging
96 mm.	<b>DAI089614</b>	100
128 mm.	<b>DAI0812814</b>	80
160 mm.	<b>DAI0816014</b>	80
192 mm.	<b>DAI0819214</b>	80
242 mm.	<b>DAI0824214</b>	80
256 mm.	<b>DAI0825614</b>	60
288 mm.	<b>DAI0828814</b>	50
292 mm.	<b>DAI0829214</b>	60
320 mm.	<b>DAI0832014</b>	50
342 mm.	<b>DAI0834214</b>	50
384 mm.	<b>DAI0838414</b>	50
392 mm.	<b>DAI0839214</b>	50
442 mm.	<b>DAI0844214</b>	50
448 mm.	<b>DAI0844814</b>	40
492 mm.	<b>DAI0849214</b>	40
544 mm.	<b>DAI0854414</b>	40
592 mm.	<b>DAI0859214</b>	30
642 mm.	<b>DAI0864214</b>	30
692 mm.	<b>DAI0869214</b>	30
736 mm.	<b>DAI0873614</b>	20
792 mm.	<b>DAI0879214</b>	30
896 mm.	<b>DAI0889614</b>	20
960 mm.	<b>DAI0896014</b>	20
1192 mm.	<b>DAI08119214</b>	20

## Stainless steel handles - Hollow



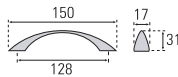
CENTERS	Ref.	Packaging
96 mm.	<b>DA18M96</b>	120
128 mm.	<b>DA18M128</b>	120
160 mm.	<b>DA18M160</b>	120
192 mm.	<b>DA18M192</b>	90
256 mm.	<b>DA18M256</b>	90
320 mm.	<b>DA18M320</b>	90
384 mm.	<b>DA18M384</b>	60
448 mm.	<b>DA18M448</b>	60
544 mm.	<b>DA18M544</b>	60
736 mm.	<b>DA18M736</b>	60
896 mm.	<b>DA18M896</b>	40

# Zamak Handles



		Centers 128 mm.	Centers 160 mm.	Centers 192 mm.	Centers 224 mm.
Chrome Matt	Ref.	<b>DA03M12823</b>	<b>DA03M16023</b>	<b>DA03M19223</b>	<b>DA03M22423</b>
Nickel Matt	Ref.	<b>DA03M12816</b>	<b>DA03M16016</b>	<b>DA03M19216</b>	<b>DA03M22416</b>
Aluminium Paint	Ref.	<b>DA03M128P</b>	<b>DA03M160P</b>	<b>DA03M192P</b>	<b>DA03M224P</b>
Chrome Shine	Ref.	<b>DA03M12801</b>	<b>DA03M16001</b>	<b>DA03M19201</b>	<b>DA03M22401</b>

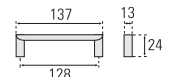
Packaging 100 units



Centers 128 mm.

Chrome Matt	Ref.	<b>DA01M12823</b>
Nickel Matt	Ref.	<b>DA01M12816</b>
Aluminium Paint	Ref.	<b>DA01M128P</b>
Chrome Shine	Ref.	<b>DA01M12801</b>

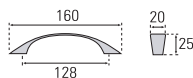
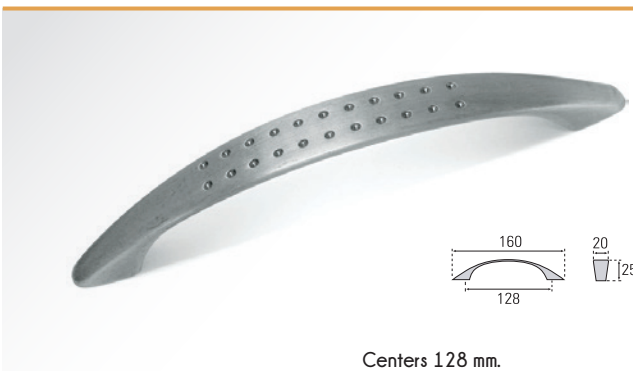
Packaging 200 units



Centers 128 mm.

Chrome Matt	Ref.	<b>DA02M12823</b>
Nickel Matt	Ref.	<b>DA02M12816</b>
Aluminium Paint	Ref.	<b>DA02M128P</b>
Chrome Shine	Ref.	<b>DA02M12801</b>

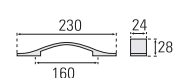
Packaging 200 units



Centers 128 mm.

Chrome Matt	Ref.	<b>DA04M12823</b>
Nickel Matt	Ref.	<b>DA04M12816</b>
Alum. Paint	Ref.	<b>DA04M128P</b>
Chrome Shine	Ref.	<b>DA04M12801</b>

Packaging 200 units



Centers 160 mm.

Chrome Matt	Ref.	<b>DA08M16023</b>
Nickel Matt	Ref.	<b>DA08M16016</b>
Alum. Paint	Ref.	<b>DA08M16001</b>

Packaging 100 units



# Handles

## Zamak Handles



Centers 128 mm.

Chrome Matt	Ref.	<b>DA09M12823</b>
Nickel Matt	Ref.	<b>DA09M12816</b>
Nickel Satin.	Ref.	
Chrome Shine	Ref.	<b>DA09M12801</b>
Packaging		100 units



Centers 160 mm.

Centers 192 mm.

Centers 256 mm.

Ref.	<b>DA10M16023</b>	<b>DA10M19223</b>	<b>DA10M25623</b>
Ref.			
Ref.	<b>DA10M160NS</b>	<b>DA10M192NS</b>	<b>DA10M256NS</b>
Ref.	<b>DA10M16001</b>	<b>DA10M19201</b>	<b>DA10M25601</b>
Packaging		100 units	



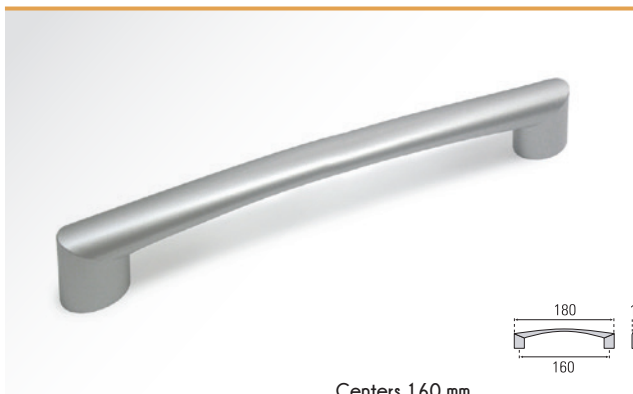
Centers 128 mm.

Chrome Matt	Ref.	<b>DA14M12823</b>
Nickel Matt	Ref.	<b>DA14M128NS</b>
Chrome Shine	Ref.	<b>DA14M12801</b>
Packaging		100 units



Centers 128 mm.

Chrome Matt	Ref.	<b>DA15M12823</b>
Nickel Matt	Ref.	<b>DA15M128NS</b>
Chrome Shine	Ref.	<b>DA15M12801</b>
Packaging		100 units



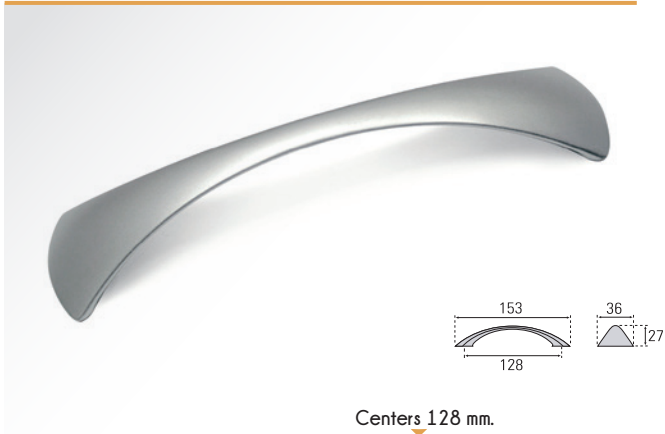
Centers 160 mm.

Chrome Matt	Ref.	<b>DA16M16023</b>
Nickel Matt	Ref.	<b>DA16M160NS</b>
Chrome Shine	Ref.	<b>DA16M16001</b>
Packaging		100 units

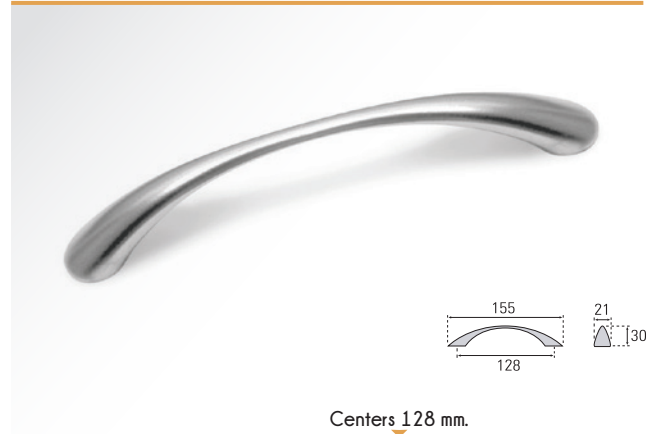


Chrome Matt	Ref.	<b>DA17M23</b>
Nickel Matt	Ref.	<b>DA17MNS</b>
Chrome Shine	Ref.	<b>DA17M01</b>
Packaging		250 units

## Zamak Handles



Chrome Matt	Ref.	<b>10CM</b>	
Nickel Matt	Ref.	<b>10NM</b>	
Alum. Paint	Ref.	<b>10PA</b>	
Chrome Shine	Ref.	<b>10CB</b>	
Packaging		200 units	



Chrome Matt	Ref.	<b>1CM</b>	
Nickel Matt	Ref.	<b>1NM</b>	
Alum. Paint	Ref.	<b>1PA</b>	
Chrome Shine	Ref.	<b>1CB</b>	
Packaging		200 units	



Chrome Matt	Ref.	<b>6CM</b>	
Nickel Matt	Ref.	<b>6NM</b>	
Alum. Paint	Ref.	<b>6PA</b>	
Chrome Shine	Ref.	<b>6CB</b>	
Packaging		100 units	